

clocetex

Flocked Carpet Collection



IL-SHIN FIBER

44 Bugangongdan-gil, Bugan-myeon, Yeongcheon-si, Gyeongsangbuk-do. South Korea. 38905

Tel. 054-726-2641 Fax. 054-726-2640 E-mail. ilshin981021@naver.com



Cloctetex

Unlike existing Loop Carpets, this product is made with approximately 80 million of 2mm cut nylon yarns per 1m² planted vertically. The high-density vertical pile makes it difficult for contaminants to penetrate, enabling a clean environment, and has excellent durability and resilience.



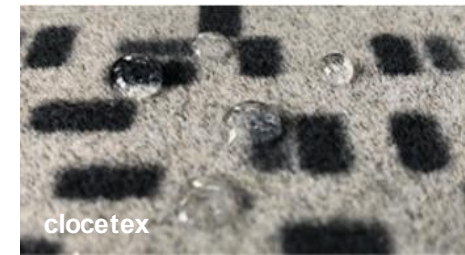
Outstanding Durability

Cloctetex, compared to existing loop carpets, tearing and breaking damage that can be caused by sharp objects is minimized. There are advantages to doing this.



Harmlessness

Cloctetex has been treated with water repellent treatment, not only blocks moisture and contamination and inhibits the growth of harmful bacteria, but also has the advantage of blocking dust and foreign substances, making it suitable for facilities that require cleanliness.



Restoration Ability

Cloctetex is a high-density, vertically arranged structure of nylon yarn that leaves no marks under pressure from heavy loads or furniture and shows excellent resilience.



What is Cloctetex?

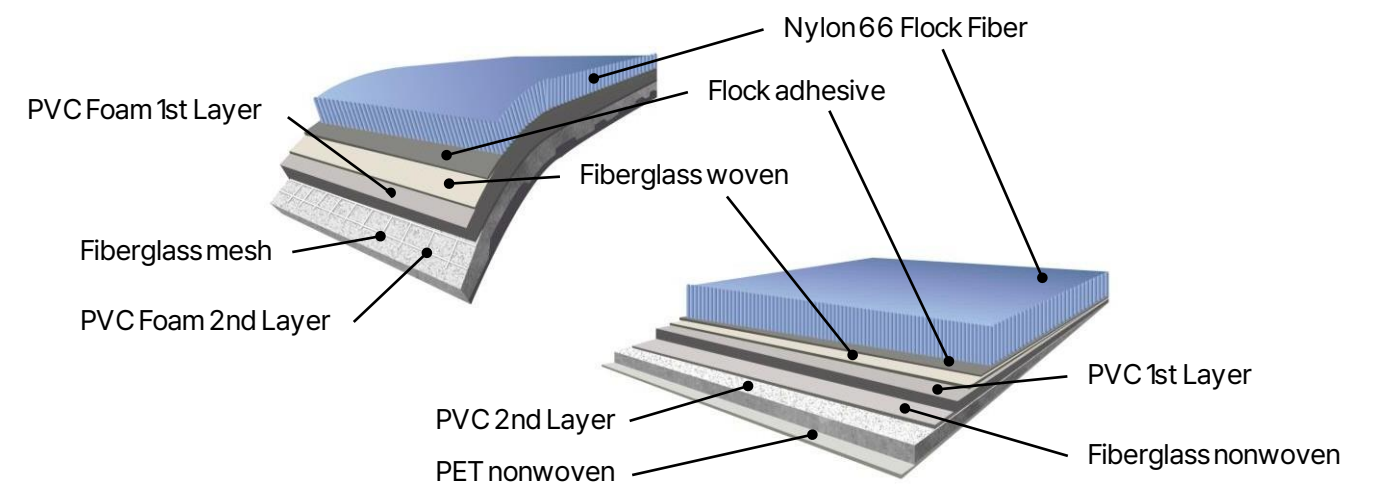
Cloctetex is Textile flooring produced in-house using flocking technology. It is a new concept carpet with 80 million pieces/m² of short-cut nylon yarn planted in a high-density vertical pile structure.

Cloctetex, with its high-density vertical pile structure, is a more durable carpet than existing loop-structured carpet. It is a hygienic, eco-friendly carpet that has excellent durability and the ability to easily remove contaminants with detergent or a vacuum cleaner by blocking the penetration of dirt and dust, and is safe from harmful substances such as bacteria and mites.

Cloctetex can be produced into Tile type, Plank type, and Roll type products, and the basic specifications of each product are as follows.

- **Tile type** : width 50cm x length 50cm (19.69" X 19.69"), Total thickness 5.3mm (0.21")
- **Plank type** : width 100cm x length 25cm ((19.69" X 9.84"), Total thickness 5.3mm (0.21")
- **Roll type** : width 1.5m x length 30m (59.05" X 11.81")

Cloctetex Roll type

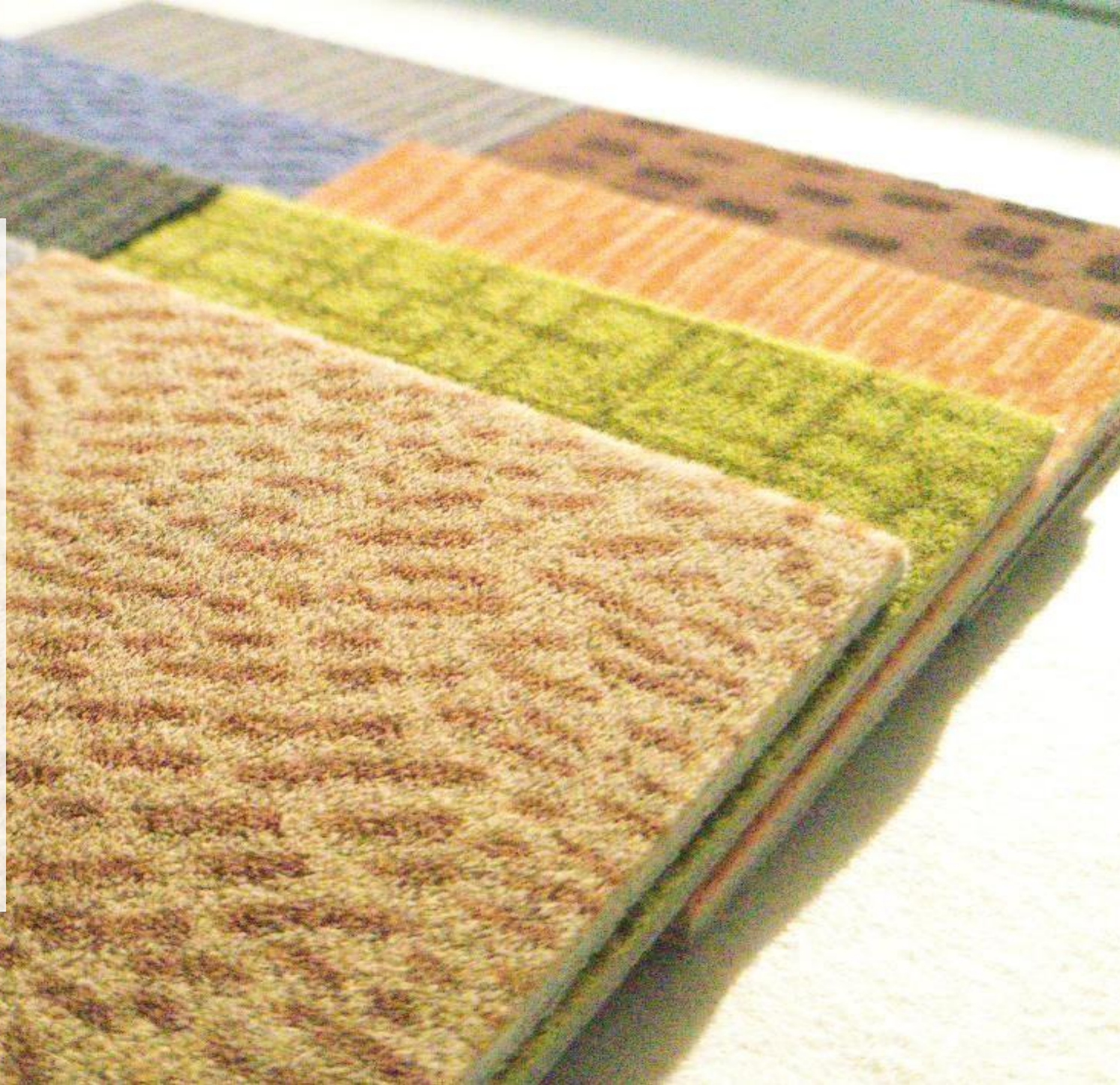


Cloctetex Tile & Plank type

Design & Color range

Cloctetex has four designs and eleven color combinations.

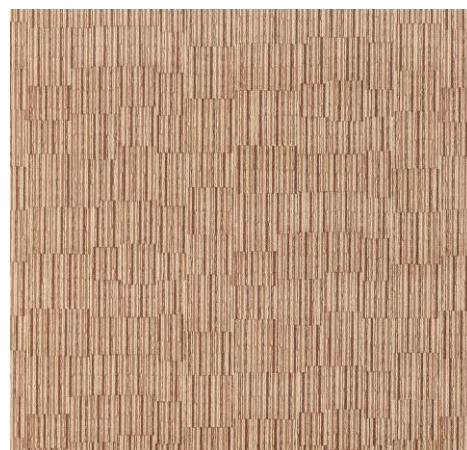
Latex, Sand, City, Mint
Through 11 color product groups within the scope of design, a variety of interior styling can be expressed through the selection of design and color, such as an urban style with a calm and sophisticated feel, a quiet and comfortable natural style, a lively style with a rhythmic layout and a casual sense, and sometimes a tranquil style. there is.



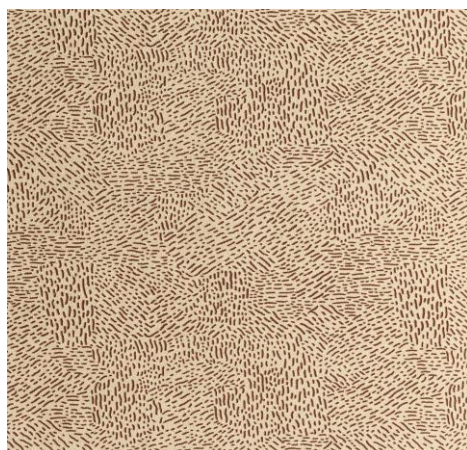
Colorrange



Design range



Latex | cloctetex



Sand | cloctetex



City | cloctetex



Mint | cloctetex



Roll type | Brown



L-041 Riviera



L-032 Winter Green



L-031 Yellow Green



L-011 Nimbus



L-012 Dark Grey



L-013 Ash



L-021 Brown



L-022 Beige



Tile type | Nimbus

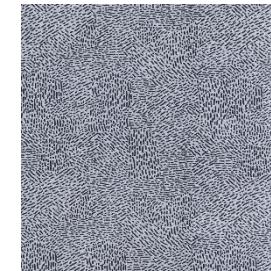


Tile type | Beige



Tile type | Yellow Green

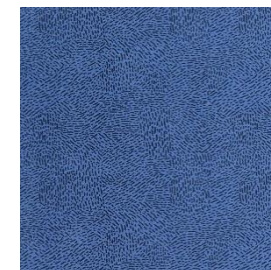
Sand | clocetex



S-011 Nimbus



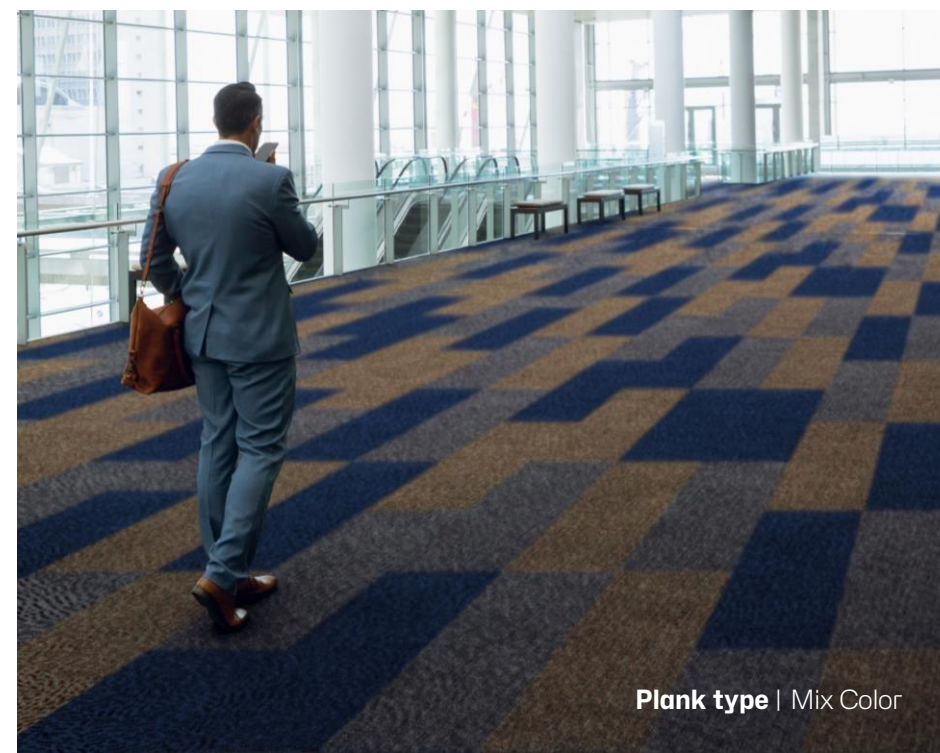
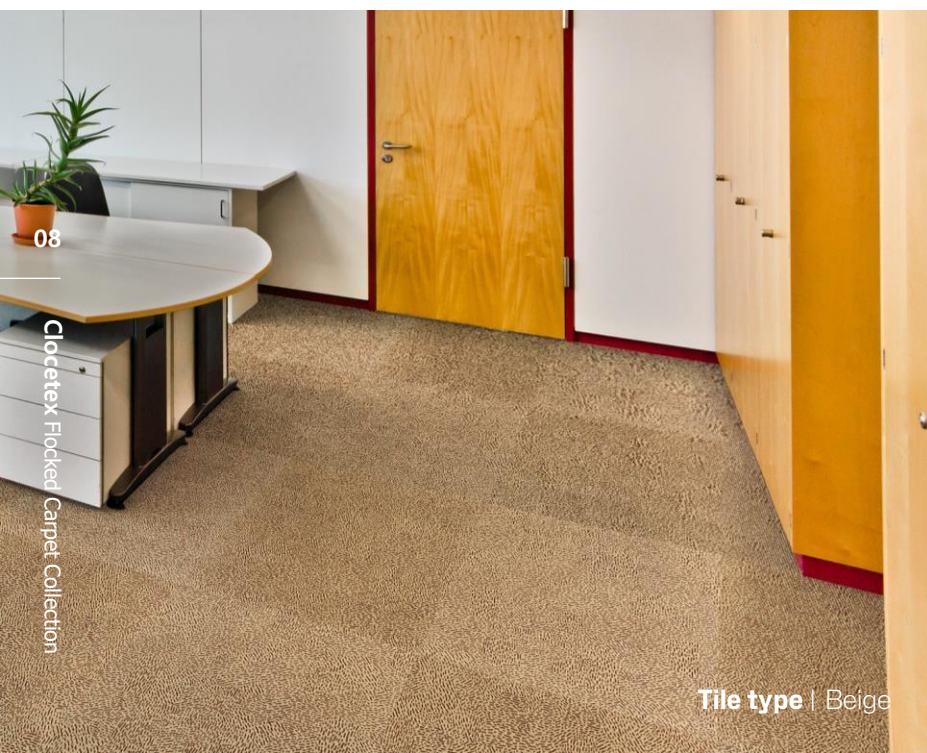
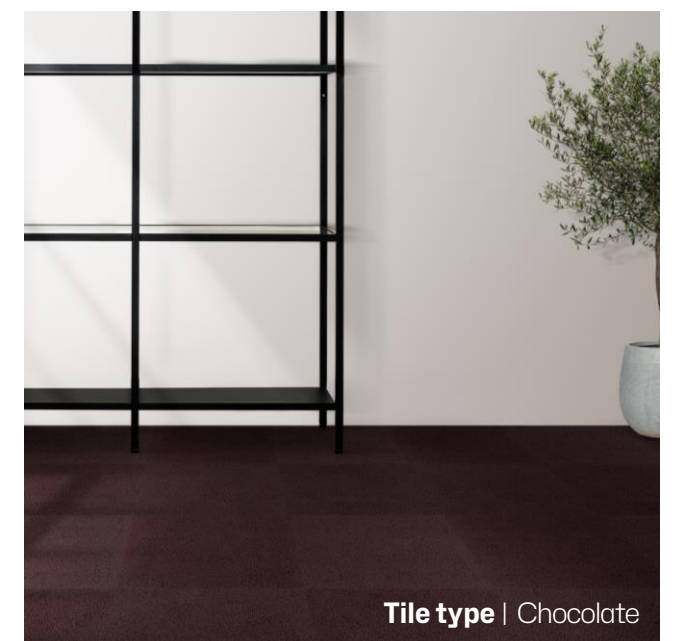
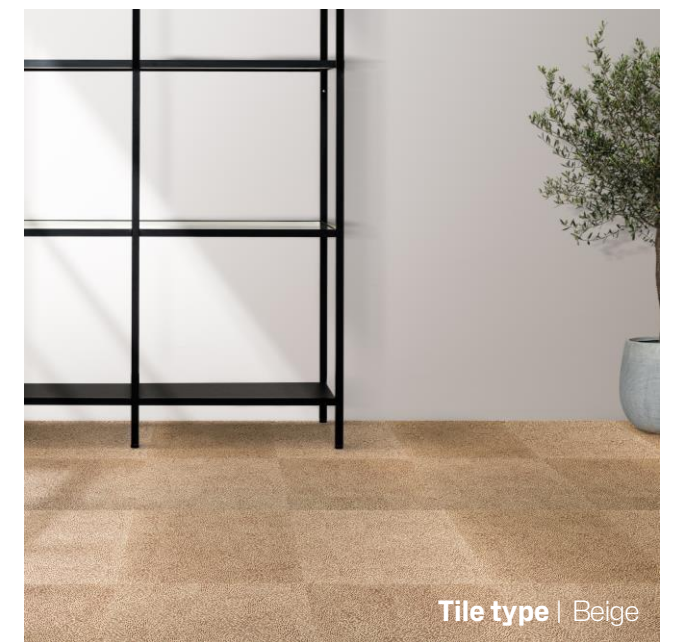
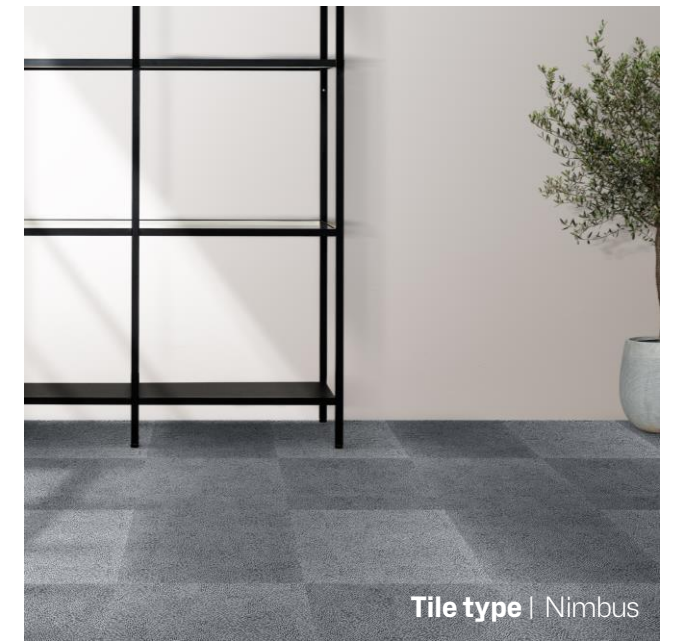
S-022 Beige



S-041 Riviera



S-061 Chocolate





C-011 Nimbus



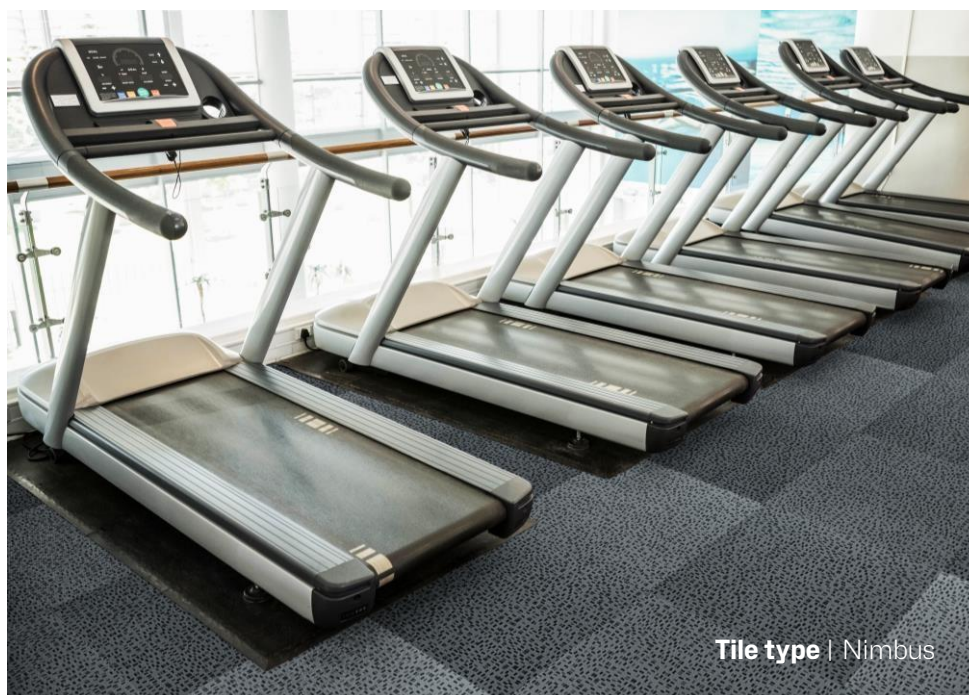
C-022 Beige

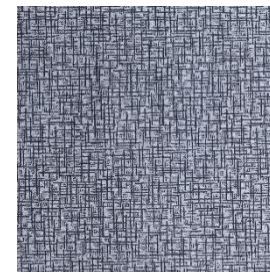


C-031 Yellow Green



C-061 Chocolate





M-011 Nimbus



M-012 Dark Grey



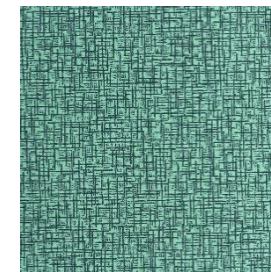
M-021 Brown



M-022 Beige



M-031 Yellow Green



M-032 Winter Green



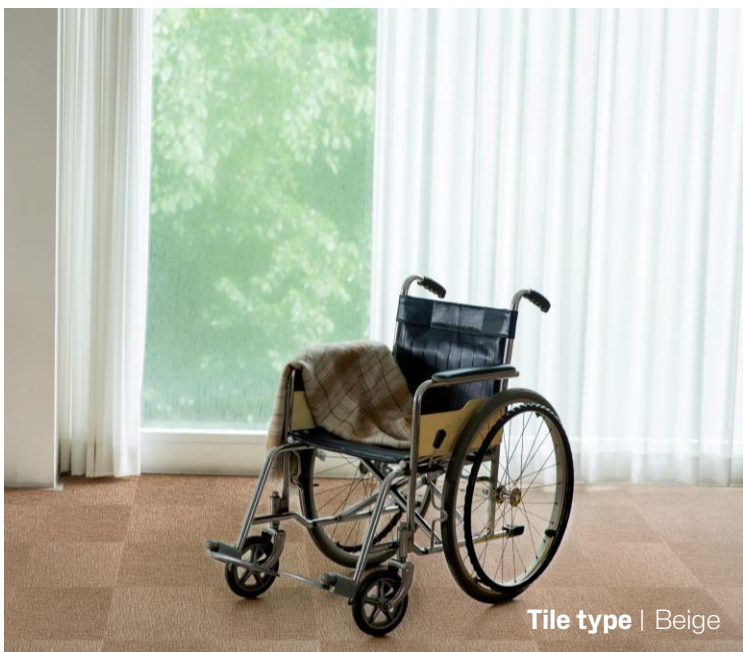
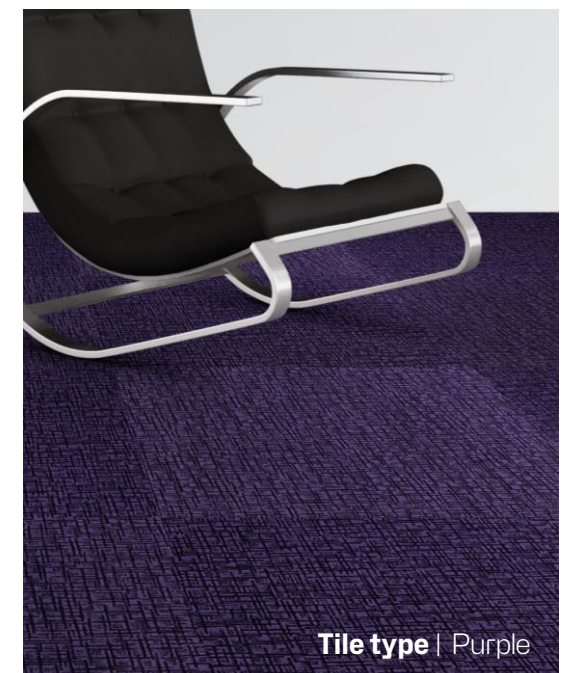
M-041 Riviera



M-051 Purple

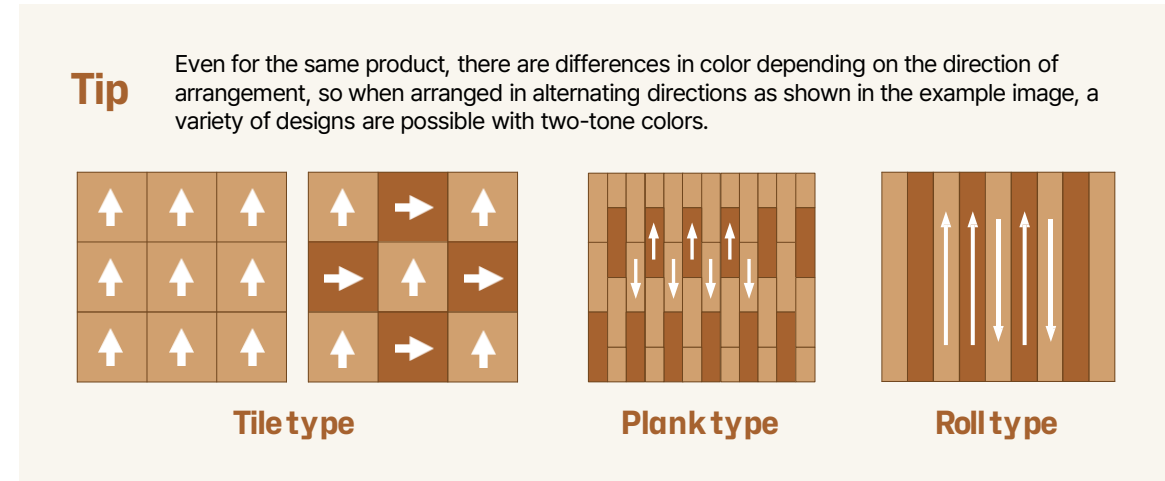


M-071 Red



Installation

1. Clean the floor of the area where construction will be performed.
2. Measure the size of the room, prepare the required quantity of products.
3. Center the door as a standard and mark it with an ink line.
4. Apply adhesive using a brush to the entire room.
5. Products are arranged based on the ink line starting from the entrance door.
6. If the edge does not meet the product specifications, use a cutter to cut it and then install it.



※ **Caution**

1. When cleaning the floor, make sure there is no moisture on the floor and remove any protruding parts to make it flat.
2. When arranging products, check the direction of the arrow on the bottom as the color varies depending on the direction of the product before arranging it.
3. Install the right angle of the products so that they match each other without any misalignment.
4. Be careful not to step on the adhesive applied to the floor.

Maintenance

1. Dirt, dust, etc. are cleaned using a vacuum cleaner with a brush attachment.
2. In case of light contamination due to liquid substances or oil stains, apply water and neutral detergent to the contaminated area, then hand wash using a soft brush. When washing, scrub with a brush and then use a spatula and dry cloth to remove contaminants.

※ **Caution:** To prevent detergents and contaminants from remaining on the carpet, wash with only water.

1. If the contamination is severe, use a carpet cleaner that can spray/suction water and detergent at the same time to clean dust and contaminants.
2. When cleaning a large space, you can use a professional carpet cleaning company to clean it. After spraying detergent and scrubbing the floor with a mechanical brush, it is cleaned using a carpet cleaner that can spray water and suction at the same time.
3. If the product is damaged, you can replace only part of it or the whole product.

Technical Specifications

clocetex Flocked Carpet data sheet

No.	Item	Standard	Requirement	Results
1	섬유 혼용율 (Fiber composition)	KS K 0210	Nylon66 100%	
2	폭 및 길이 (Tile size)	KS K 1417	500X500 (mm)	
3	직각정도 (Squareness of edge)	KS K 1417	< 0.1%	
4	바퀴의자시험 (Castor chair test)	KS K 1417	< 0.15%	
5	치수안정성 (Dimensional stability)	KS K 1417	< 0.10%	
6	말림 (Curing/Doming)	KS K 1417	< 1.5mm	
7	일광견뢰도 (Light fastness)	KS K ISO 105-B02	> 5	
8	마찰견뢰도 (Rubbing fastness)	KS K ISO 105-X12	> 4	
9	물견뢰도 (Water fastness)	KS K ISO 150-E01	> 4	Pass
10	박리저항성 (Delamination resistance)	KS K 1417	> 50mm 당 40N	
11	대전성 (Body voltage)	KS K 1417	< 2.0 KV	
12	불투수성 (Water impermeability)	KS K 1417	물 침투 흔적 없을 것 탄화길이 : < 10cm	
13	난연성 (Flame resistance)	KS K 1417	잔염시간 : < 20초	
14	파일사 용제 추출분 (Solvent Extractables of fiber)	KS K 1417	< 0.9%	
15	미끄럼저항성 (Slip resistance)	KS M 3510	DS : > 0.30	
16	소음저감 (Acoustical impact noise reduction)	KS K ISO 717-2	ΔLw = 22dB	
17	항균성 (antibacterial)	KS K 0693	99.9%	